

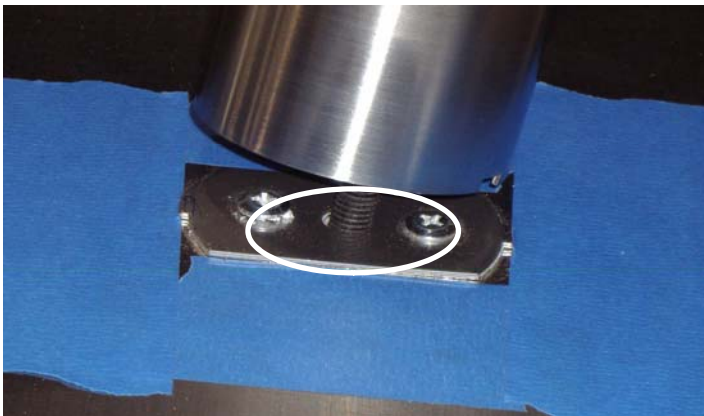
ASSEMBLY INSTRUCTIONS FOR RFL  
450 & 540, RSQ 450 & 540 AND ALL  
MILAN SERIES BASES

1- Carefully remove the base plate from the packaging. Rest the base plate face up supported by two sturdy faces. Hint- A couple of chairs (you might want to protect the seat surface with some cardboard) or a couple of sturdy boxes will do.



2- To protect the stainless surface against scratches the protective film can be left on the base plate until the assembly is complete. If the base plate did not come with the protective film, strips of masking tape can be placed over the alignment washer to protect the stainless surfaces against scratches. **Note:** The masking tape is not necessary if caution is taken to not scratch the stainless surface

3- Insert the long threaded bolt into the hole in the mounting plate. Carefully pick up the whole assembly with one hand on the column and the other holding the head of the long



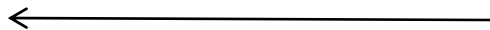
4- Put the end of the long threaded bolt into the hole of the alignment washer. Once this is done, align the 2 tabs of the alignment washer with the 2 slots in the column

ASSEMBLY INSTRUCTIONS FOR RFL  
450 & 540, RSQ 450 & 540 AND ALL  
MILAN SERIES BASES

**5-** Next, align the 2 tabs of the spider mounting plate with the 2 slots in the column. This might be hard to see, so make sure the tabs are in the slot. While still holding onto the mounting plate hand tighten the nut to the threaded bolt. Note: if the tabs are difficult to get into the slots leave them for now and go to step 6.



**6-** Inspect to see that all of the tabs are securely in their slots. Use the supplied tool to firmly tighten the nut. If the tabs did not initially slip into the slots, lightly tighten the nut enough allow some movement so the tabs and the slots can be properly lined up. When they are aligned, tighten the nut some more and lightly jiggle the column or the mounting plate. The tabs should pop in the slots. Now tighten firmly



**7-** Remove the plastic film and trim any excess from the base of the column with a knife or a razor knife. Clean the surface with a good quality stainless steel cleaner. White vinegar is also a great environmentally friendly cleaner

